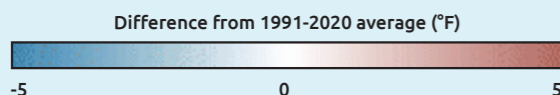
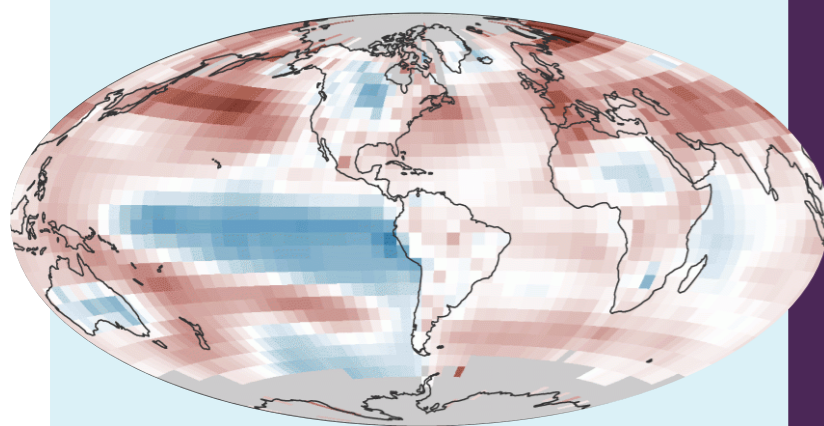


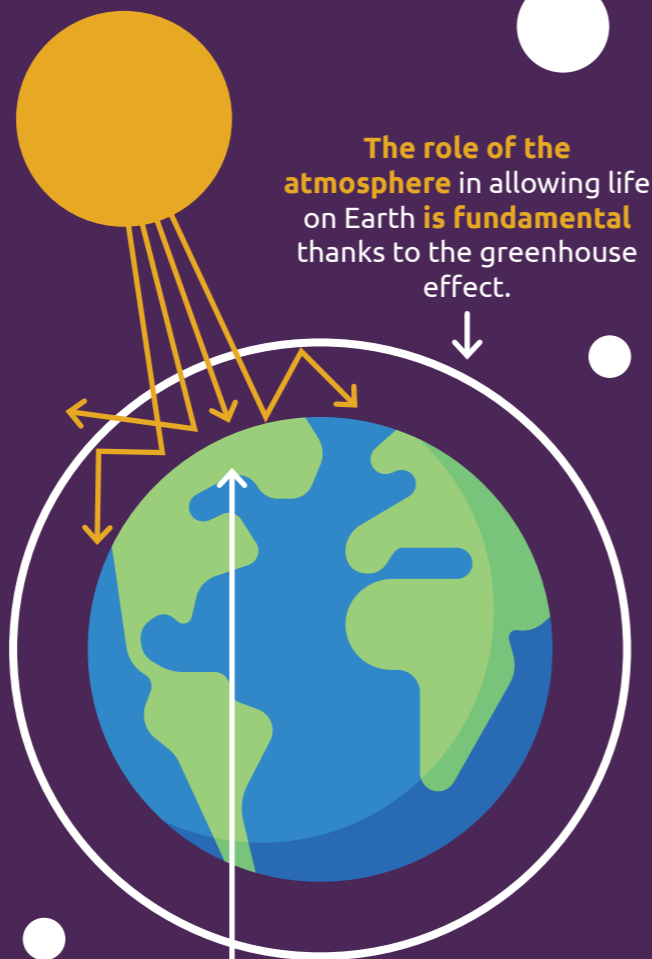
key facts about CLIMATE CHANGE

Climate change refers to long-term changes in temperatures and weather patterns. The increase in the average temperature of the Earth's surface has been recorded at different stages of our planet's climate history. However, we are witnessing an anomalous global warming due to anthropogenic contribution.

it's official
2022 WAS WORLD'S 6TH WARMEST YEAR ON RECORD (1880-2022)



GREENHOUSE EFFECT



The role of the atmosphere in allowing life on Earth is fundamental thanks to the greenhouse effect.

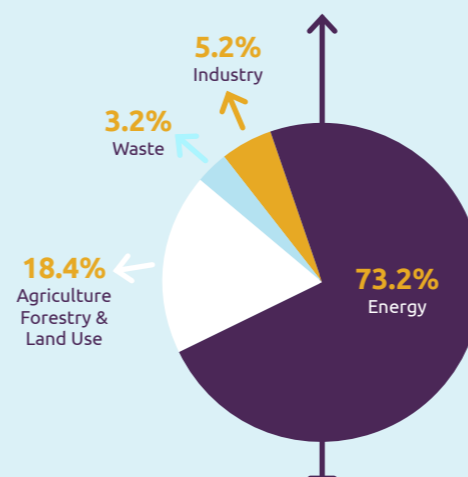
When the sun's rays reach the Earth's surface, they are partly absorbed and partly reflected outward.

Thanks to atmosphere, those reflections are partially retained and redirected to Earth by some gases in the atmosphere, called greenhouse gases. As a result, additional heat is added to the heat from directly absorbed sunlight.

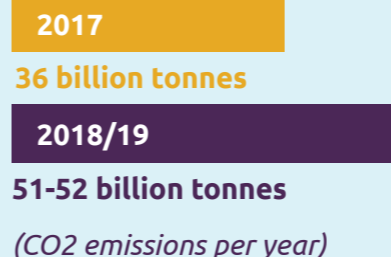
the ANTHROPOGENIC CONTRIBUTE

Industries, transports, energy production facilities contribute to increased emissions of CO₂ and from fossil fuels.

2016
 Global greenhouse gas emissions by sector (global greenhouse gas emissions 49.4 billion tonnes CO₂eq)



Global greenhouse emissions have grown significantly in the past 150 years

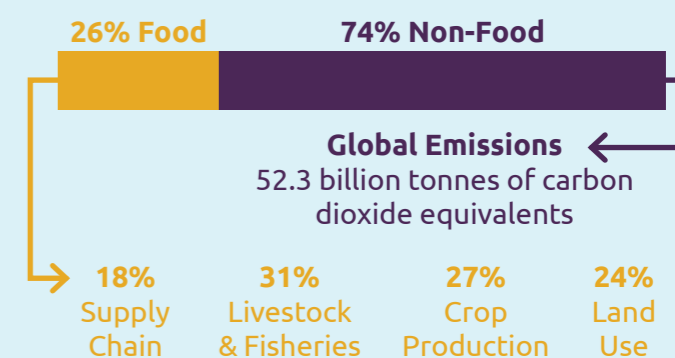


There is a connection between the prosperity of a nation and its carbon emission: in terms of one person's carbon footprint, wealth is one of the strongest indicators



Food Production

A large part of emission of nitrous oxide and methane comes from agriculture and livestock, which grow more and more intensive.



Who emits the most CO₂?

